

modulo pi
www.modulo-pi.com

Modulo Pi designs the next generation of Media Servers:
intuitive, user-friendly, creative and fully integrated.
The extensive capabilities of our solutions will help you
create stunning visual experiences for everyday shows or
the most breathtaking productions.

modulo π

modulo pi

We are a young French company with a lot of experience

15 years ago, our founder and CEO led a team which designed one of the first Media Servers ever made. Since that time, he has been in direct contact with creatives, producers and technicians around the world: watching how they work, collecting their feedback.

We have taken this knowledge and developed our own technology.

Today we present a new generation of Media Servers, this time designed with users in mind.

We strongly believe that complexity is not a feature and design our solutions accordingly.

Modulo Player and Modulo Kinetic are offering all the features for any type of production, no matter its size and technical requirements, as well as a unique user interface designed for intuitivity and efficiency.

From corporate events to live shows or permanent installations, we provide the highest level of reliability and performance to our customers. We are proud of the hundreds of projects around the world which have been powered by Modulo Pi since 2012. Our relationship with users is a constant source of inspiration and innovation, and keeps us ahead of this ever-evolving industry.



PERMANENT INSTALLATION

LE DERNIER PANACHE
Puy du Fou © Cosmo AV



EVENTS & LIVE SHOW

HIPA - Hamdam International Photography Awards
Production: Auditoire Dubai © Pixel n°Pepper



MAPPING

LUX ANIMAE - Metz Cathedral
Artistic Director: Yann Nguema
Light designers: Arnaud Doucet & Gaël Digne
Musical composition: Ez3kiel
Production: La Maison Production © Studio pierre 2 lune

TWO CUTTING-EDGE SOLUTIONS TO MEET YOUR NEEDS

Media Servers keep pushing back the limits of creativity.

As they can now be used in a vast array of applications, more than one system is needed to fit all types of project.

That is why we offer two solutions: Modulo Player, to cover day-to-day needs in an easy, reliable and efficient way, and Modulo Kinetic which is equipped with all the advanced features required for the most demanding productions.



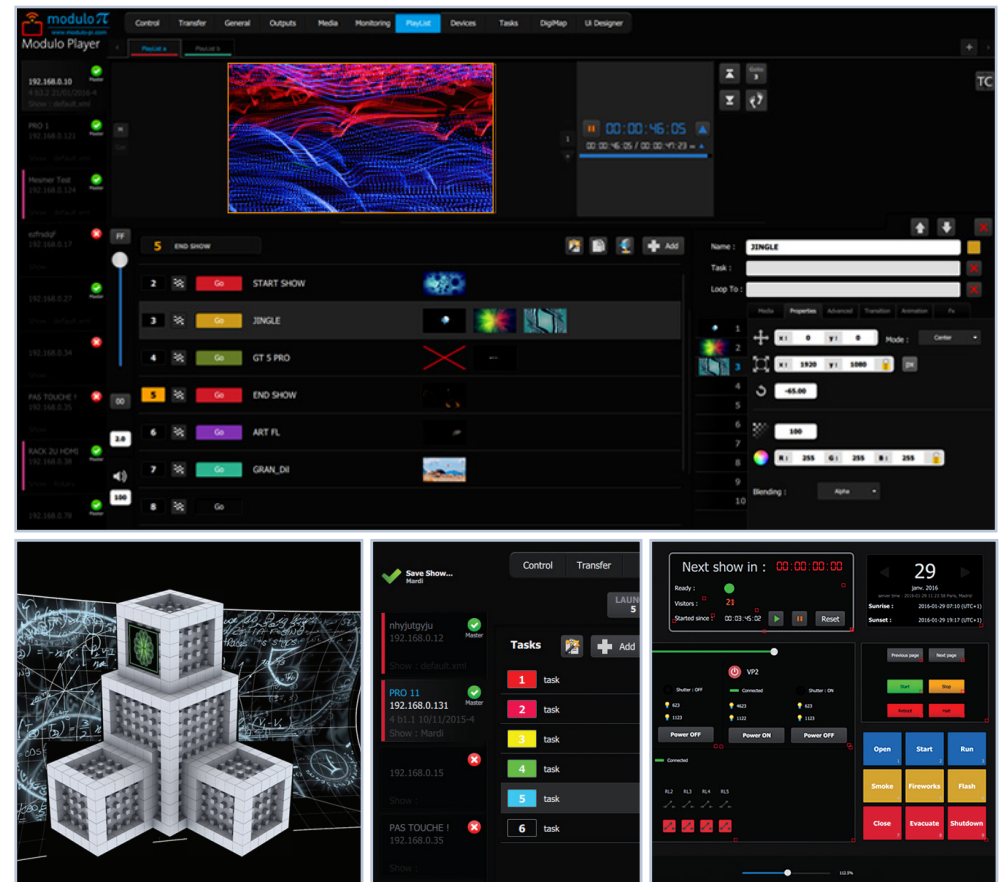
MODULO PLAYER

More than a Media Player

Modulo Player is the perfect Media Server for everyday projects. It is easy to learn, set up, and use, thanks to its intuitive user interface. Offering cutting-edge features to handle a wide range of projects, it's an extremely versatile system.

- Exclusive Playlist with advanced features
- Easy setup & workflow
- Advanced 2D warping with our innovative X-Map feature
- Low-latency live real-time mixer
- Design your own user interface
- Show control - Simple, yet powerful

Hardware conceived and manufactured for the highest performance.





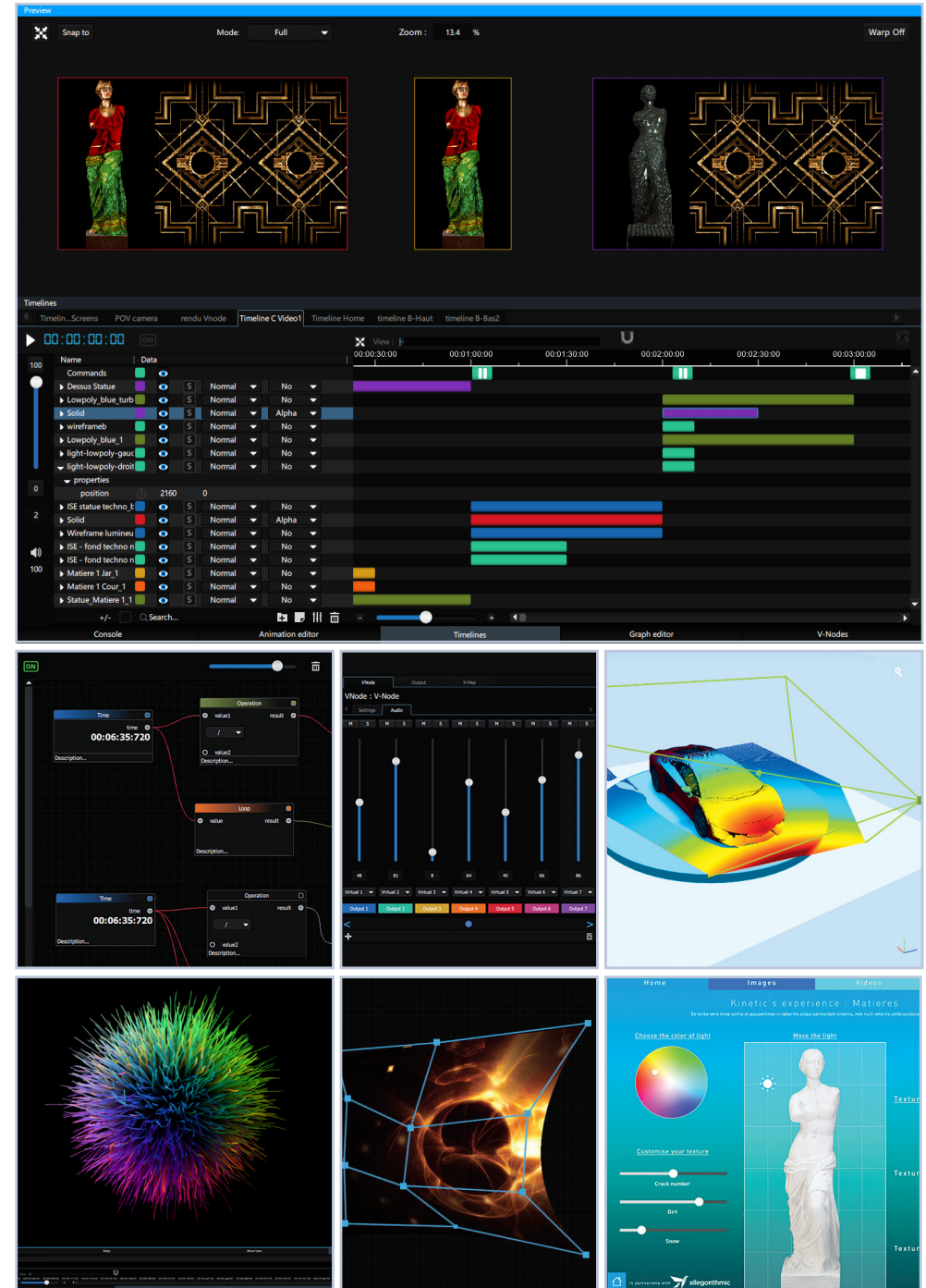
MODULO KINETIC

More than a Media Server

Modulo Kinetic is our high-end all-in-one solution. It offers the most advanced tools required for the most demanding projects, and brings them into one logical and fully integrated ecosystem, providing flexibility, productivity and performance through each step of your workflow.

- Smart user interface
- Multi-timelines editing with key frames
- Advanced real-time 3D engine
- Projection study and simulations in 3D
- Interactivity with easy-to-use nodal programming
- Advanced 2D warping with our innovative X-Map feature
- 3D projector calibration
- Low-latency live real-time mixer
- Design your own user interface
- Show control - Simple, yet powerful
- Easy-to-use automatic master/slave backup switch

Hardware conceived and manufactured for the highest performance.





TWO CUTTING-EDGE SOLUTIONS TO MEET YOUR NEEDS

