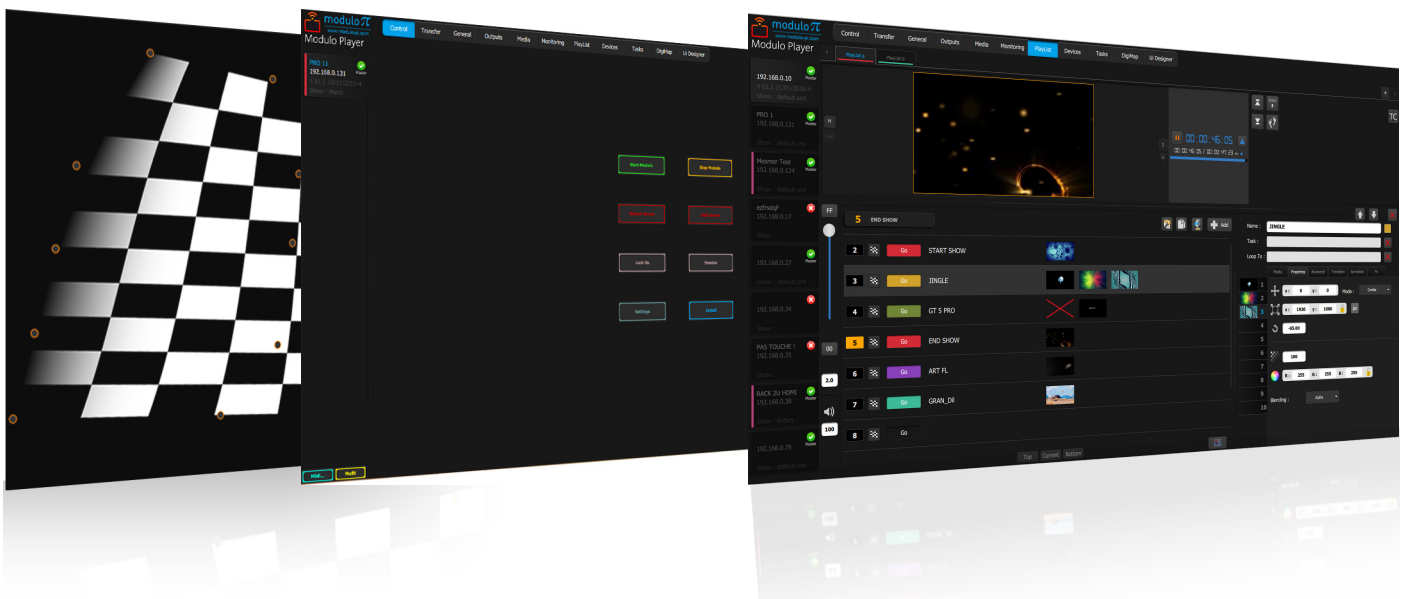
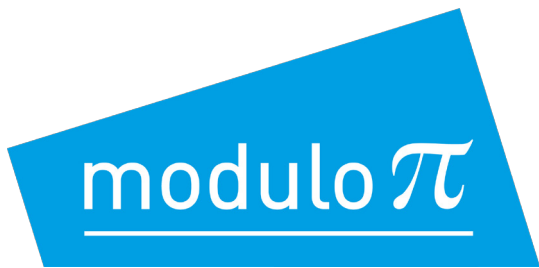


- SMOOTH MEDIA PLAYBACK
- PERFORMANCE AND QUALITY
- RELIABILITY
- INTUITIVE USER INTERFACE
- ADVANCED WARPING AND COLOR CORRECTION
- EDID CONFIGURATION DIRECTLY VIA REMOTE
- X-MAP MODE : VIDEO MAPPING
- INTEGRATED SHOW CONTROL
- CREATE YOUR OWN USER INTERFACE



Synchronous multi video server developed for permanent installations and events: Shows, Museums, Outdoor video projections, Mapping, Showrooms, Exhibits, Theatres, Corporate events.

Easy to use, Modulo Player gives you access to the most advanced features to help you in your video projects.



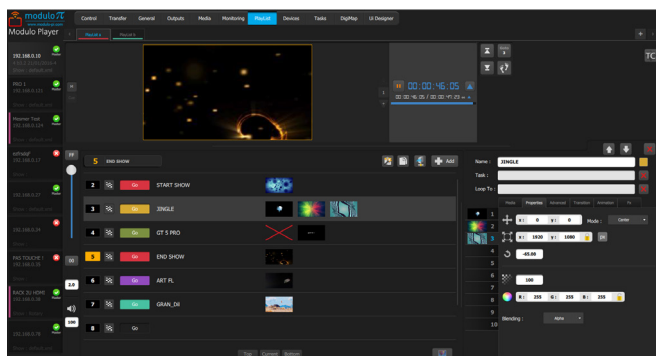
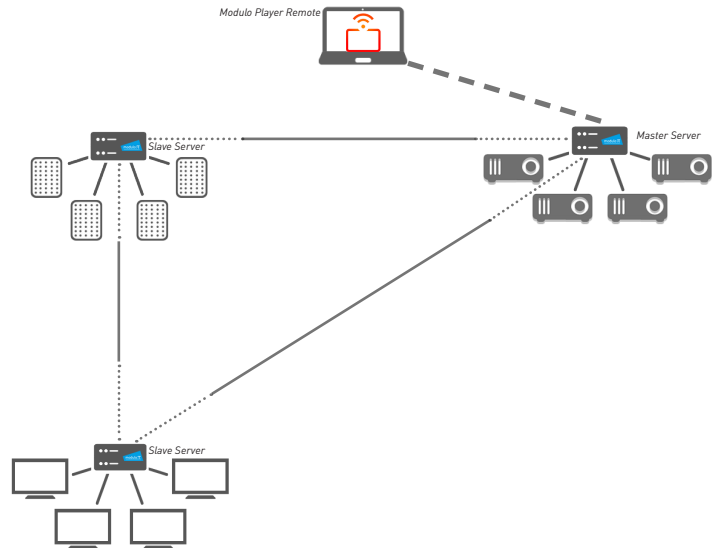
Modulo Player Workflow

Modulo Player Server - Modulo Player Remote

Modulo Player is a complete solution for video with an easy to use workflow. Modulo Player Remote allows you to prepare and distribute media from a unique interface to all your Modulo Servers connected to the same network. Once encoded, Modulo Player Servers can work autonomously and synchronously.

Modulo Player multi-Server

Encode your Playlists on Modulo Master Server: add media, prepare your composition. Once you encode all Show on Master Server, you can copy Playlists to all Slave servers, so that they diffuse media synchronously. You can also filter media per server, and use the Modulo sync application to transfer media simultaneously to all servers.

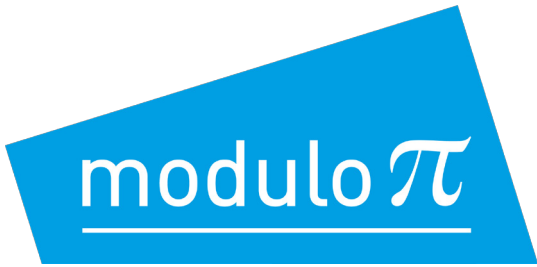


Playlists

The Remote control software is easy to install on your notebook (Mac/PC). The interface is made of relevant pages allowing you to manage your project readily even if you are an occasional user.

Create infinite number of Playlists. Create Cues, parametrize each layer.

You can launch Cues manually or program them to be launched automatically. You can equally launch tasks synchronized with the Cue launch.



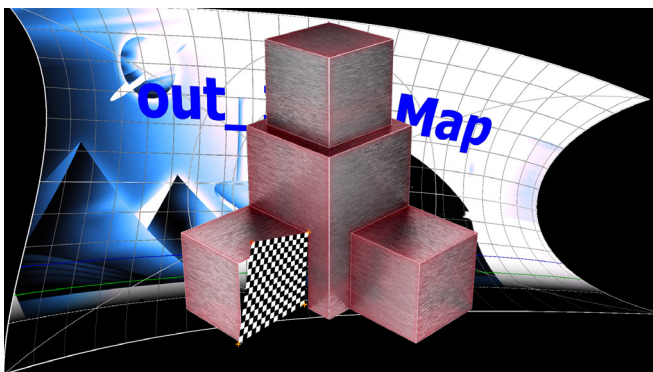
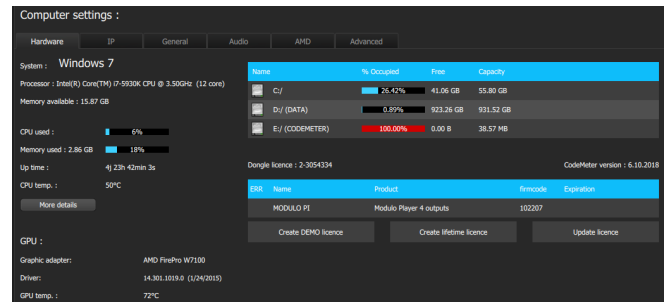
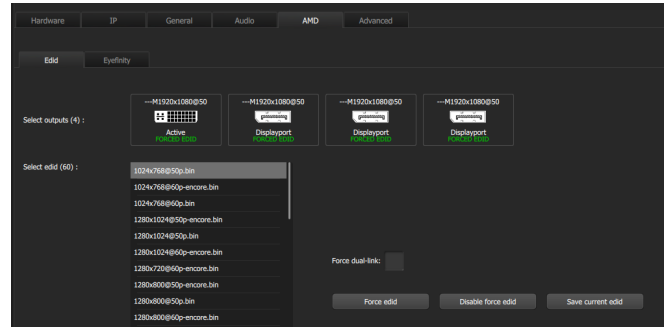
Easy Setup

Easy to use, Modulo Player Remote application allows you to Setup your Server's outputs in one click. Force EDID to your Outputs, save incoming EDID of your displays. Once your resolution set, you can work with an extended desktop (Eyefinity) for more than one outputs.

In the Hardware panel of the Remote application you can find all necessary information concerning your server's System, directories, FAN speed, temperatures, CPU and RAM usage as well as graphics card driver and BIOS version.

You can modify directly via the Remote the Modulo Server's IP address.

You can lock/ unlock your Server's OS.



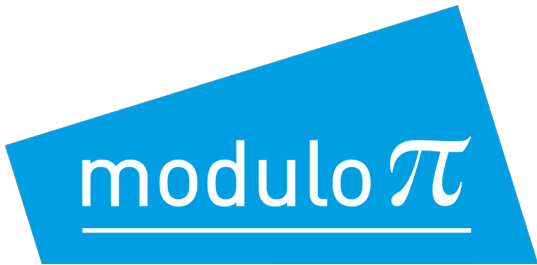
Outputs Warp Tools

Warp your Outputs easily in Keystone or Curve. Use a variety of tools.

Several users can access simultaneously in warping complex surfaces.

From the list of Test patterns available, select Softedge (or Small Softedge) to calibrate overlapping between projectors.

The X-MAP function when activated allows you to work with masks: create your own masks and shapes using Photoshop, and import your .psd template to warp each shape independently.



Media

Modulo Player can play smoothly up to 4K H.264 sequences. It also supports MPEG2 files up to 4K.

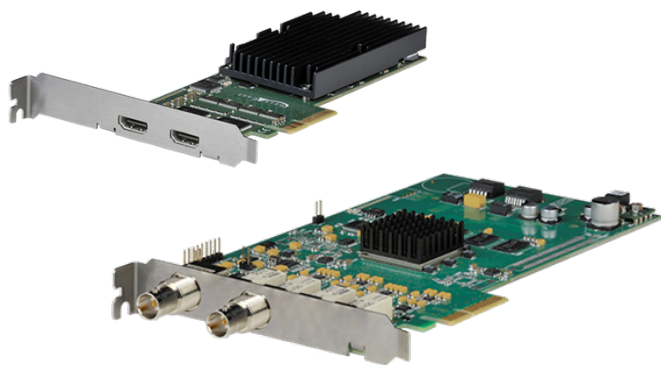
Modulo Player supports HAP, HAP Alpha and HAP Q to allow very big resolutions with low CPU overhead.

Modulo Player can handle most common still-image file formats such as .png, .jpg and .tiff files.

You can play audio embedded with your video or uncompressed audio (aiff, wav). Modulo Player allows you to play multichannel audio (ASIO). You can affect each audio channel and assign it to one or several outputs in order to control audio rendering in the finest way.

As an option, you can playback uncompressed TGA still image sequences to ensure a perfect quality and the best user experience.

You can arrange your media in folders.



Hap
codec

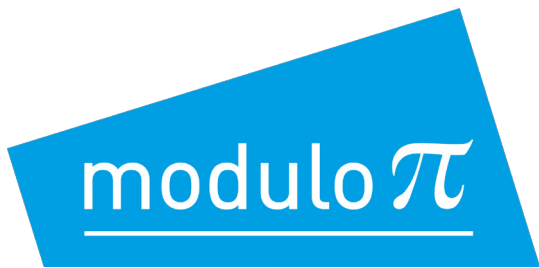


Low Latency Live Capture

Combined to a specific capture card HDSDI or HDMI/DVI, Modulo Player enables you to add live capture with low latency in your events.

Auto detect your inputs, force EDID on HDMI card directly from the Modulo Player Remote.

A monitoring tab on the Modulo Player Remote allows you to arrange all your inputs in a mosaic, and diffuse them live from the Server, in a separated Monitoring display.



Device Show Control

Although Modulo Player can work in pairs perfectly with an external show Control, it includes an embedded one.

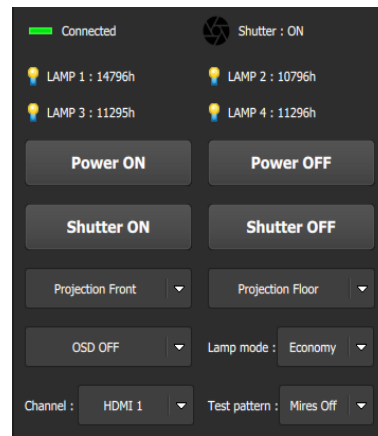
This way you can specify automation of tasks related to the projectors, monitors, servers, auto start, etc... directly in Modulo Player.

Modulo Player allows you to control a large number of devices: projectors, Video Controller, matrix switcher, GPIO, power switcher.

You can easily monitor the status of your Projectors.

Modulo Player supports the following protocols (non exhaustive list):

- Dmx Art-net,
- Midi,
- OSC,
- LTC Timecode,
- MTC Timecode,
- Ethernet TCP/IP
- UDP, Serial...



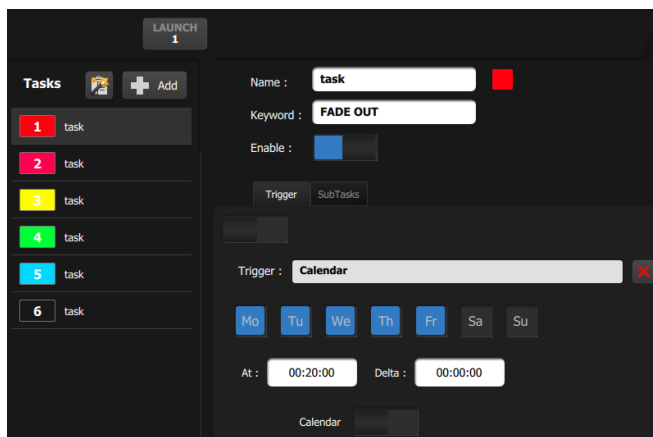
Task Show Control

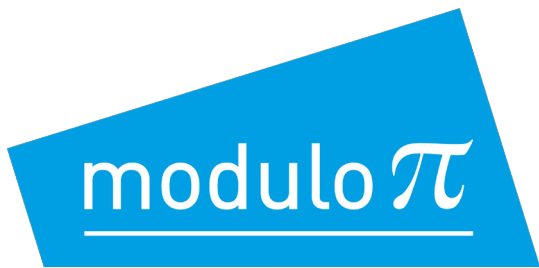
Create tasks to manually control you show. Tasks allow you to automate actions.

You can launch tasks automatically via the Player interface, by using a midi device or by enabling other devices as triggers.

Launch tasks manually or integrate them to Cues in Playlists.

You can also launch tasks from your Android tablet or iPad, using the Modulo Panel application.





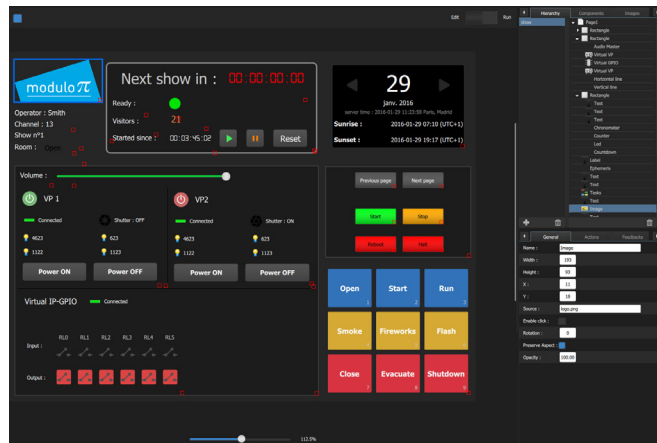
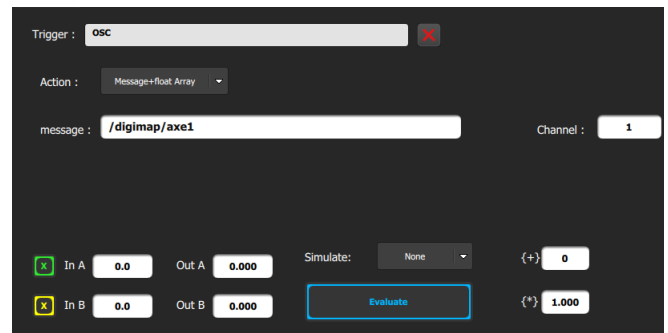
DigiMap

Control parameters of media in a Playlist or X-Map from the DigiMap panel.

Add a device as trigger (such as OSC, Rotary IP, midi, etc) and patch parameters such as position, opacity, etc. to control interactively the layers.

Select an action and calibrate the patch.

This way you can create your own patches, to add interactivity or automations to your show.



User Interface

Create your own user panel. Deploy your interfaces on Mac / PC / Android / iOS!

You can create as many custom user interfaces as you want. You can protect user login with a password.

Drag & drop your tasks, add buttons, text, image, web page...

Drag & drop your devices in the interface panel to control and monitor them.

Adaptability

Modulo Player has a wide range of applications and match perfectly your needs for:

- Permanent outdoor installations: reliable system, robust software, powered-optimized hardware.
- Theme Parks, Permanent Shows: schedule boot via Bios, wake up on LAN, perfectly synchronous multi-server launch.
- Touring concerts, Musicals: DMX control via Art-Net, Led Mapping, Timecode, Midi triggers, 2D panel tracking...
- Corporate Events: Intuitive multi-playlists, low latency live capture, fast mapping tools...
- Contemporary Art Exhibits: Uncompressed TGA for unmatched quality, easy to use, fast warping correction.

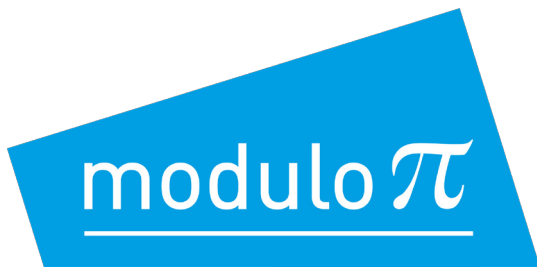


Reliability

Modulo Player is build on top of the powerful and stable Modulo Core Engine already available since years.

We work closely with some key hardware manufacturers (graphics cards, live capture cards) and we benefit a direct support from the driver developers.

Using an embedded Windows Seven X64, Modulo Player is designed to highly resist in case of power failure which makes it especially trustworthy. We pay due attention to our hardware and software reliability and have it tested regularly.



FEATURES

PLAYLIST: Infinite number of Playlists and Cues, 10 layers per cue.
Trigger per cue: Go / Wait / Follow / Timecode.

SETTINGS PER LAYER: Position, rotation, scale, opacity, color, fade in/out, in/out video, media (movie, still image, sound), loop, transition, drop shadow, border, fx, speed change, advanced colorimetry, crop, progressive mask, clip, animation.

SYNCHRONIZATION: Master/Slave server synchronization. Optional synchronization of the master playlist with LTC¹ timecode, internal timecode or MTC¹ timecode.

OUTPUT TOOLS: Warp grid: keystone or curve, advanced softedge generation, test pattern, advanced color adjustment, still alpha mask per output, advanced X-Map for complex projection mapping.

SHOW CONTROL: Device control powered by automated tasks (Midi¹, video projectors, internal control, TCP/IP GPIO¹, counter, OSC, Art-Net DMX, matrix switcher, ...).
Trigger task launch: manually, from the playlist, from devices (TCP/IP GPIO¹, midi¹, calendar, chronometer, countdown, counter).
Control your Modulo Player with an easy TCP/IP protocol.
The Modulo Player software starts automatically when the server starts.

INTERACTIVITY: Control parameters of the playlists from DigiMap panel.

MEDIA

SUPPORTED MEDIA² :

Video H.264 (4.2.0), Mpeg2 (4.2.2), HAP, HAP Q, HAP Alpha
Resolution up to 4K or more depending on codec.
Framerate : 25P, 30P, 50P, 60P.
Multiplexed audio with the H264 and mpeg2 codec.

Uncompressed image sequences³ : TGA, RGBA.

Still images .png, .jpg, .tiff.

Audio Multi-channel audio files⁴(.wav, .aiff).

Acquisition Optional low latency capture card⁵ HDSDI, DVI, HDMI.

Other text, scrolling text, web pages, counter / countdown / clock

OUTPUTS

RESOLUTIONS: Up to 2K or WUXGA on each output.

Optional 4K output⁶.

3D Stereo³ Option: Active 120Hz⁷.

CONTROL INTERFACE

An intuitive interface allows you to configure the application. This control interface is available on PC and Mac.
For permanent installations, this interface is used for configuration only. The players operate independently once they are configured.

Create your own user panel. Deploy your panel on Mac / PC / Android / iOS!

¹: subject to add an optional card/ interface

²: refer to the document 'Media Creation', downloadable from our site at Customer Area

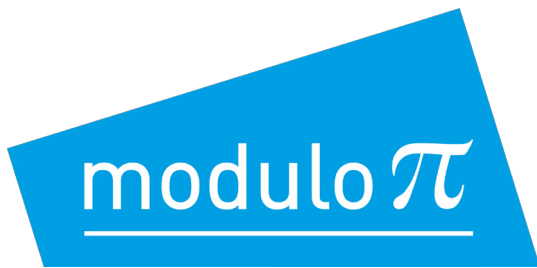
³: available only on versions MP-UX-1, MP-UX-2, MP-UX-3, MP-UX-4

⁴: 7.1 asymmetric audio output by default (mini-jack) for all versions - not available in the Nano-1 version

⁵: subject to add an optional card/ interface, available only with versions Pro and Uncompressed

⁶: available only on versions MP-STD-4, MP-PRO-4, MP-PRO-5, MP-PRO-6, MP-UX-4

⁷: optional DisplayPort to DVI 120Hz adapter



VERSIONS

Modulo Player offers 4 types of hardware in order to perfectly correspond with clients' requirements. We are listening to our clients' needs so it is possible to customize our versions described below by adding a timecode card, live capture card, additional storage capacity, etc.

Nano Modulo Player Nano is the perfect choice if you need a very small player for simple use. You can adjust warping and use the embedded show control.

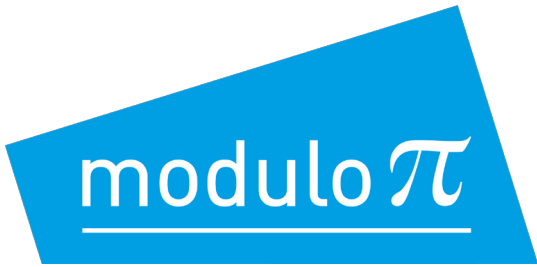
Standard Modulo Player standard version supplies a well-balanced hardware that matches well with permanent installation such as museum exhibition or permanent shows.

Pro Modulo Player Pro version supplies a powerful configuration with additional storage capacity. This hardware is perfect to handle events like corporate events or live. As an option you can add up to 3 dual inputs low latency capture cards.

Ultra Modulo Player Ultra version meets the most specific needs : uncompressed TGA still images sequences reading, active 3D stereo display.

DESCRIPTION

Reference	Outputs	SSD	Processor	RAM	Graphics	Edid	Uncompressed / 3D	Optional Capture Card
Nano								
Nano-1	1	120 GB	i5-2 cores	2 x 2 GB	Intel			
Standard								
MP-STD-1	1	2 x128 GB	i7-4 cores	2 x 4 GB	Firepro W4100	✓		
MP-STD-2	2	2 x128 GB	i7-4 cores	2 x 4 GB	Firepro W4100	✓		
MP-STD-3	3	2 x128 GB	i7-4 cores	2 x 4 GB	Firepro W7100	✓		
MP-STD-4	4	2 x128 GB	i7-4 cores	2 x 4 GB	Firepro W7100	✓		
Pro								
MP-PRO-1	1	60GB + 2 x 512 GB	i7-6 cores	4 x 4 GB	Firepro W7100	✓		✓
MP-PRO-2	2	60GB + 2 x 512 GB	i7-6 cores	4 x 4 GB	Firepro W7100	✓		✓
MP-PRO-3	3	60GB + 2 x 512 GB	i7-6 cores	4 x 4 GB	Firepro W7100	✓		✓
MP-PRO-4	4	60GB + 2 x 512 GB	i7-6 cores	4 x 4 GB	Firepro W7100	✓		✓
MP-PRO-5	5	60GB + 2 x 512 GB	i7-8 cores	4 x 4 GB	Firepro W9100	✓		✓
MP-PRO-6	6	60GB + 2 x 512 GB	i7-8 cores	4 x 4 GB	Firepro W9100	✓		✓
Ultra								
MP-UX-1	1	60GB + 4 x 512 GB	i7-6 cores	4 x 4 GB	Firepro W7100	✓	✓	✓
MP-UX-2	2	60GB + 4 x 512 GB	i7-6 cores	4 x 4 GB	Firepro W7100	✓	✓	✓
MP-UX-3	3	60GB + 8 x 512 GB	i7-6 cores	4 x 4 GB	Firepro W7100	✓	✓	✓
MP-UX-4	4	60GB + 8 x 512 GB	i7-6 cores	4 x 4 GB	Firepro W7100	✓	✓	✓
Options								
SDI-3G-2					Live Card Capture 2 inputs HDSDI-3G			
HDMI-4K-2					Live Card Capture 2 inputs HDMI			
TC-PCIE-R					Timecode Card Reader PCIe			



Modulo Player

Easy Video Mapping

SPECIFICATIONS

Frame:	19-inch Rack 4U	
Dimensions:	with handles:	485mm x 176.80mm x 530 mm (WxHxD) 19.10" x 6.96" x 20.87"
	without handles:	427mm x 176.80mm x 480mm (WxHxD) 16.81" x 6.96" x 18.90"
Weight:	~18Kg/ ~40lbs	
Packing:	545mm x 285mm x 665mm (WxHxD)	
	21.46" x 11.22" x 26.18" ~20Kg/ ~44lbs	