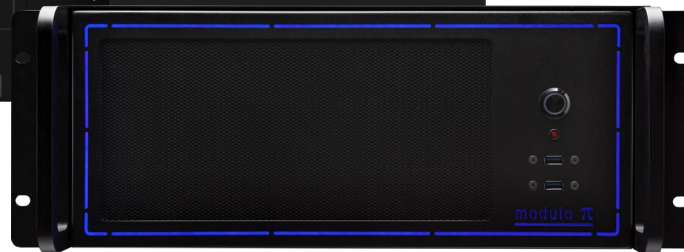
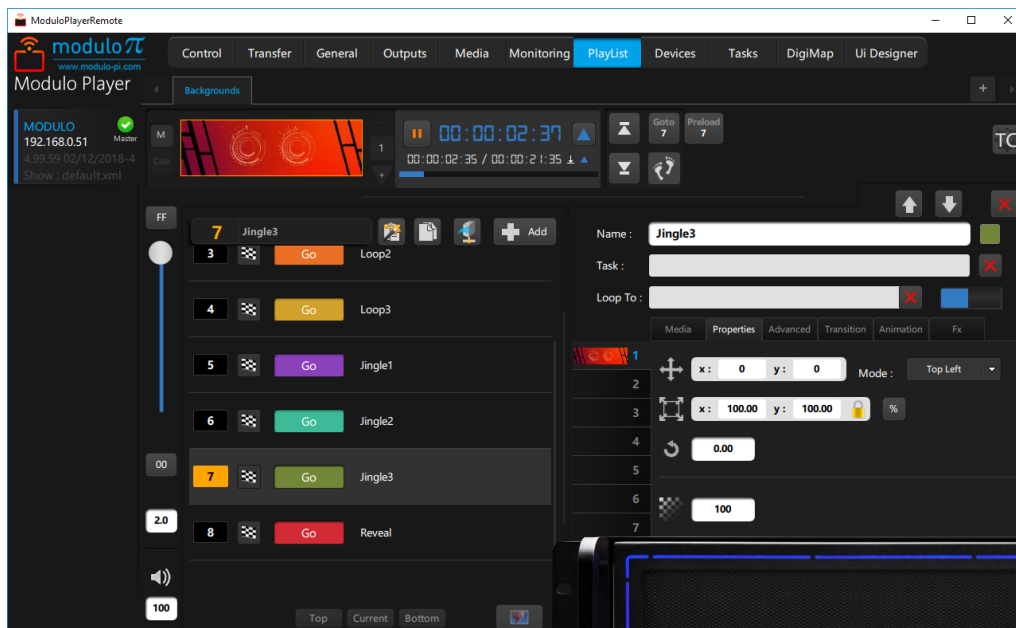




More than a Media Player

Modulo Player, a cost-effective media server ideal for your everyday projects



Easy to learn, setup, and operate, Modulo Player combines the extensive capabilities of a media server, and a live mixer.

Seamlessly process media, encode, and play your show through its super intuitive user interface.

Simple-to-use workflow and playlist enable fast show setup, and last-minute changes.

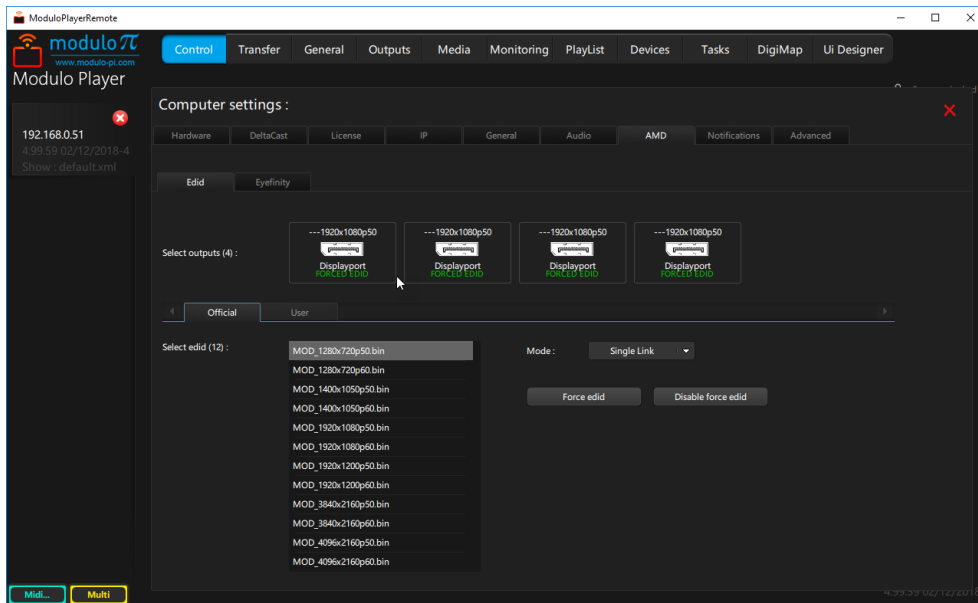
- Flexible playlist management
- Advanced 2D warping through our exclusive X-Map function
- Embedded low-latency live mixer **I NEW I**
- True multi-user mode for optimized setup and operation
- Easy, yet powerful show control
- User Interface designer to easily create your own UI
- Available in 4 customizable hardware configurations

Learn more with our video presentations and tutorials available online.



Super Intuitive Software

for easy setup and operation



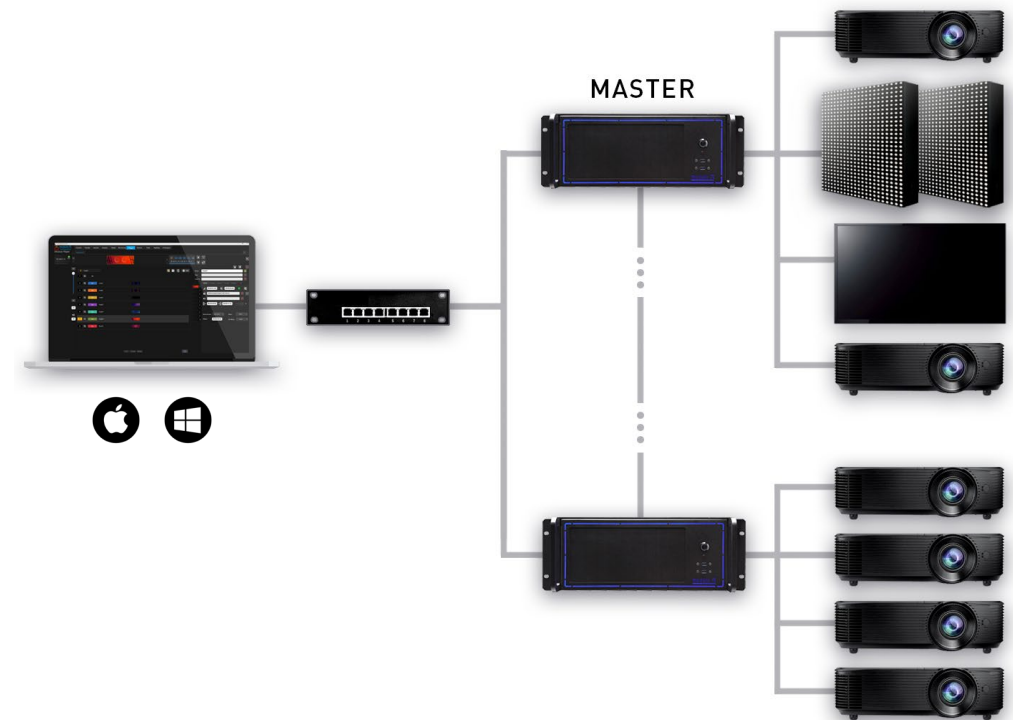
Modulo Player comes with a dedicated Remote Control Software designed to optimize setup, workflow management, and show control (compatible with PC and Mac).

No matter the number of media servers, one remote control software is needed to work on the server(s) settings, as well as the overall setup, media encoding, transferring, and show playback.

The setup menu is straightforward and logical: the system is ready to use after just a few clicks.

The multi-user application allows several users to run some features simultaneously, such as warping outputs or encoding media.

The playback servers can run autonomously without the remote control. This helps optimize costs and maintenance for some projects, such as permanent installations.





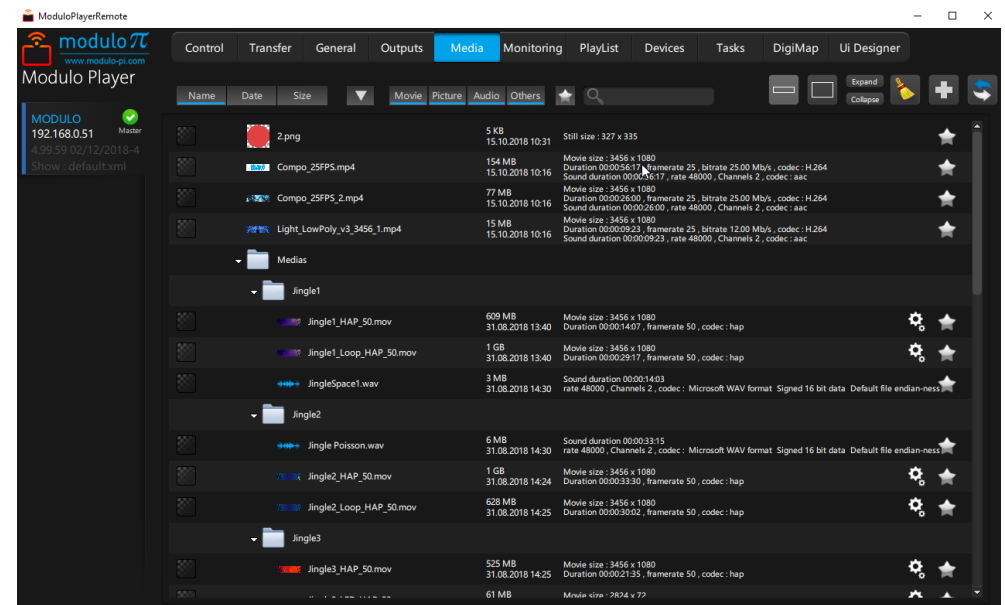
State-of-the-Art Media Processing

for unparalleled image quality

Modulo Player is designed to process media seamlessly and provide the best image quality, while running on a streamlined hardware configuration.

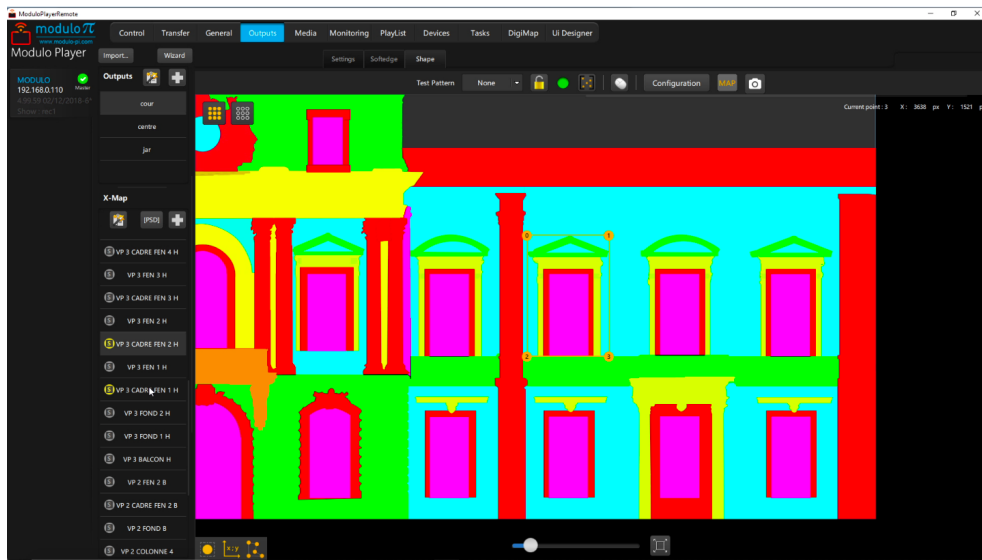
All supported media formats were selected so that they always run smoothly, and can be synchronized on all the servers:

- H.264 and MPEG2 files up to 4K
- HAP files, allowing the processing of very high-resolution media with low CPU usage
- GoPro Cineform
- Apple ProRes, 10-bit ProRes for exceptional quality, compatible with production tools used by creative studios
- Uncompressed still sequences TGA or 10-bit DPX, QuickTime uncompressed RGB, YUV 8 or YUV 10 bits for ultimate visual quality (optional)
- Multichannel audio with professional sound cards and ASIO format
- Independent audio channels for simplified routing to one or several outputs
- 3D 120Hz processing for projects requiring stereoscopic projection (optional)



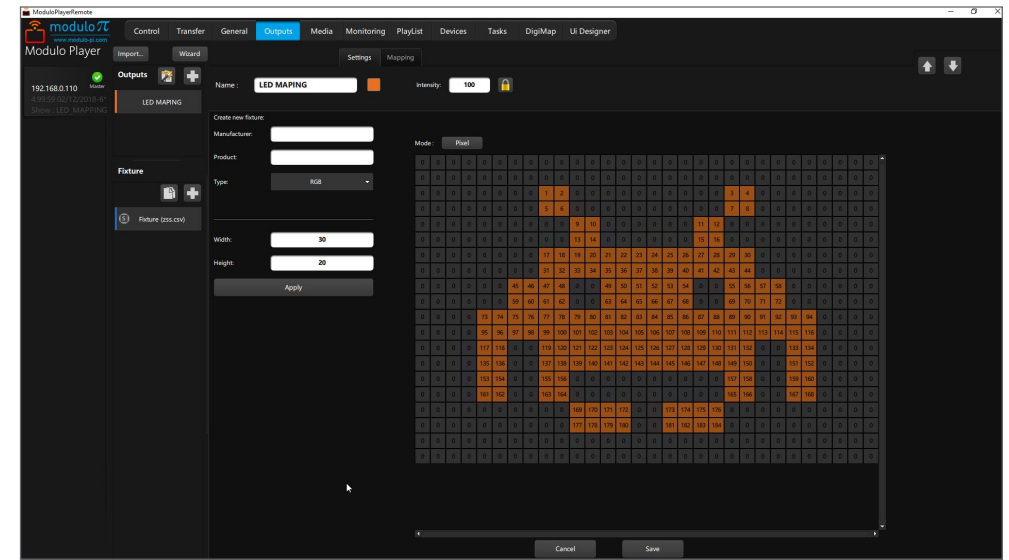


Powerful Warping Tools for stunning mapping



A complete set of tools ensures a fast and easy warping of your outputs. For the most complex shapes, our exclusive X-Map function will help you save time and money. No need for an expensive 3D workflow: simply import a Photoshop file, extract its layers, and warp them independently.

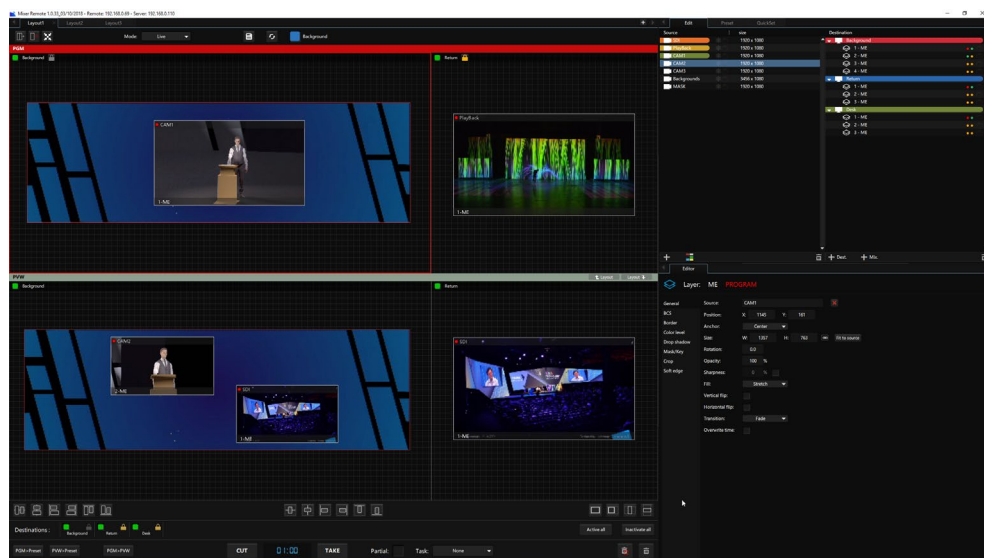
DMX & Art-Net compatibility for lighting control



Easily playback video content as DMX to control LED stripe and lighting fixtures. Modulo Player offers a video to Art-Net converter which uses the GPU to deliver pixel accurate DMX over Ethernet in real time.

Embedded Live Mixer

taking integration to the next level



All the capabilities of a true live mixer and a versatile media server, now within one fully integrated system. As a world's first, Modulo Player now embeds a true live mixer:

- Dedicated application (PC, Mac)
- Live Program, Preview, and Confidence screens
- Unlimited number of destinations and mix engines
- Workspace area selection turned into a source
- Presets management & Quickset function
- Mask & Keying
- Transition effects: fade, flying,...
- Cut & Take buttons

For better ease of setup and operation, Modulo Player is a multi-user device: several operators can work simultaneously on the media server and mixer interfaces. All contents and operations are perfectly synchronized.

Live input boards

to match any of your requirements

Our GPU-based solutions integrate live input cards, including FLEX video I/O technology by Deltacast.

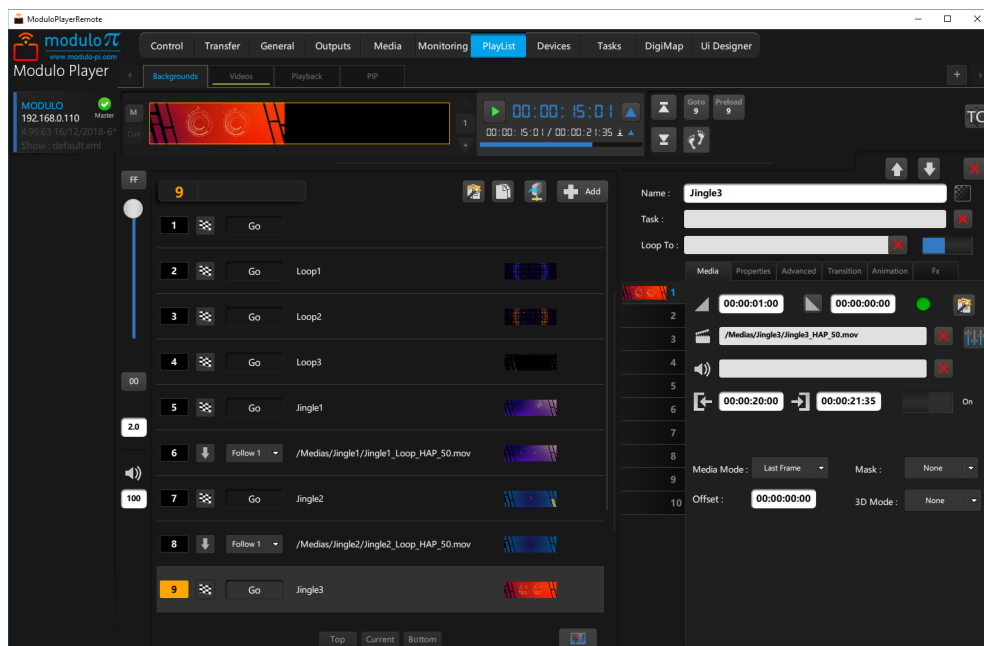
- Up to 8 x SD/HD/3G-SDI inputs
- Up to 4 x HDMI 2.0 inputs

Modulo Player supports NewTek's NDI technology. It allows you to stream multiple high-quality live video sources across an Ethernet network, and use them as inputs. Visualize all your live sources on your custom designed monitoring output and/or stream them over NDI.



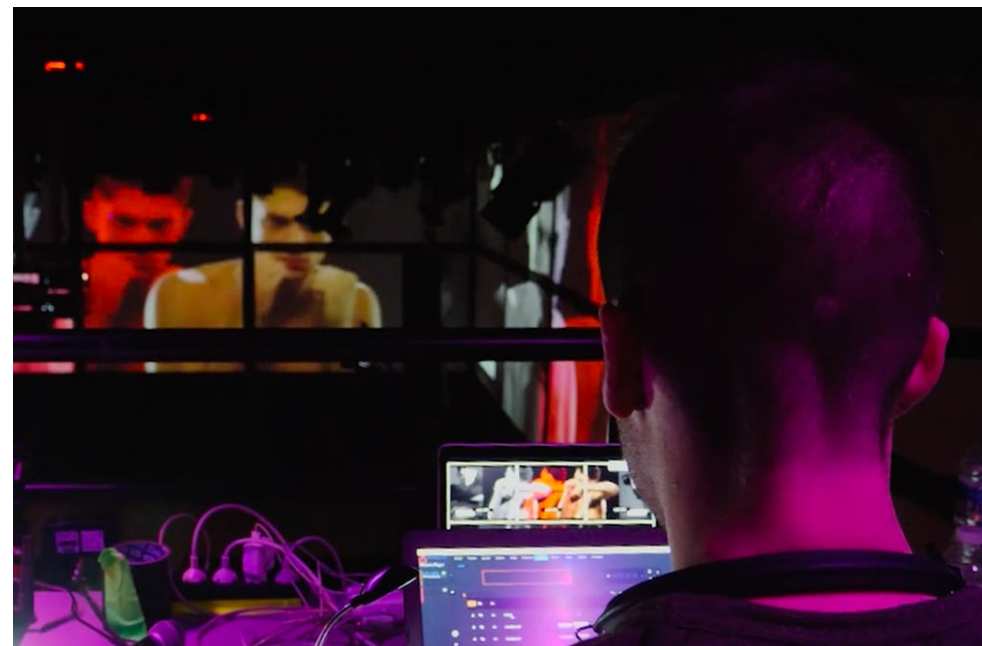
Advanced Playlist System

for flexible show management



Modulo Player is based on a flexible and user-friendly playlist system:

- Unlimited number of playlists and cues
- Cues can be triggered manually or automatically
- High flexibility allowing last-minute changes
- Synchronization with MTC or LTC timecode whenever needed (optional)
- Multiple layer settings available, including position, scale, rotation, color control, movie speed



All operations can be easily performed through Modulo Player's intuitive user interface.



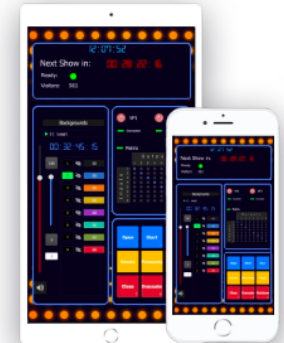
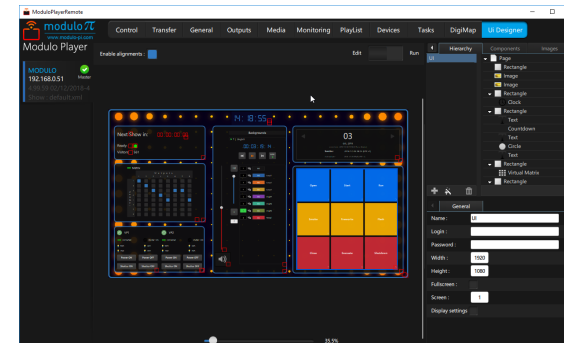
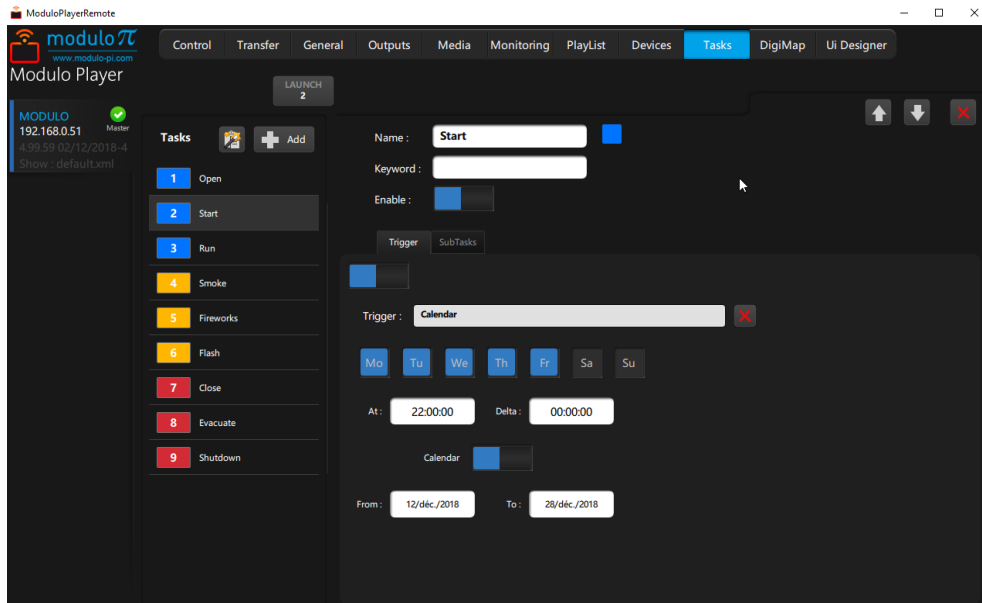
Extensive Show Control Capabilities

for full control of your show

Create, control, and play automated tasks for a wide number of preloaded external devices including video-projectors, matrix switchers, video processors. An extensive library includes a large number of external devices with their main parameters to ensure fast and easy control through Modulo Player. Trigger tasks from specific devices such as Calendar, MIDI, OSC, GPIO, Art-Net and DMX.

Easily create different panels using the UI Designer: drag-and-drop tasks, add buttons, texts, images, web pages, etc. Each custom user interface can be protected with a user login and password.

The user panels are compatible with PC, Mac, iOS, and Android devices.





Software + Hardware Designed & Manufactured

for the highest performance and flexibility

Our systems are based on strictly qualified GPUs. We are technology partners of graphic cards and live input boards leading manufacturers. We are always in touch with the driver's developers.

All our systems are running on Windows 10 LTSB 64 bits. All information about the hardware, such as temperature, storage capacity or memory usage, are available within the software at any time.

Modulo Player is available in **4 different hardware configurations** to fit your needs and budget. The different hardware configurations can all be customized: add a timecode card, a live capture card, additional storage capacity, etc.

NANO

Modulo Player Nano is the perfect choice if you need a very small player for simple use. You can adjust warping and use the embedded show control.



STANDARD

A cost-effective solution with a hardware configuration specially designed for fixed installations such as museum exhibitions or permanent shows.



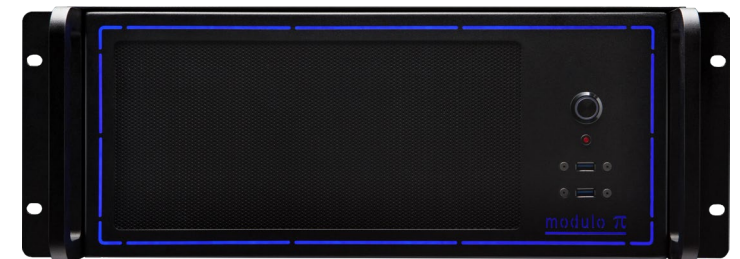
Regular chassis

PRO

A powerful configuration combined with additional storage capacity. Perfect for corporate or live events, with customization options: add up to 3 low latency live capture cards (2, 4 or 8 inputs depending on the model of your card).

ULTRA

Modulo Player Ultra meets the most specific needs: Still uncompressed TGA/DPX images sequences reading, active 3D stereo display.

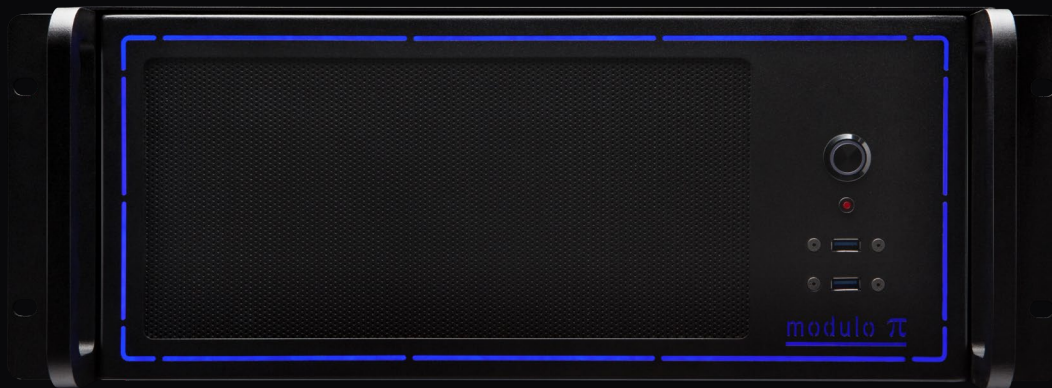


| NEW | Ruggedized suspended chassis

A Rugged Suspended Chassis

for utmost reliability

A **NEW** ruggedized suspended chassis is now available as an option. It offers reinforced framework and professional connectivity to endure rough conditions.



DESCRIPTIONS

REFERENCES	OUTPUTS	SSD	OPTIONAL CAPTURE CARD
NANO			
NANO-1	1 output 2560x1600	40 GB + 200 GB SSD	
STD			
MP-STD-1	1 output 2560x1600	40 GB + 200 GB SSD	
MP-STD-2	2 outputs 2560x1600	40 GB + 200 GB SSD	
MP-STD-3	3 outputs 2560x1600	40 GB + 200 GB SSD	
MP-STD-4	4 outputs 2560x1600	40 GB + 200 GB SSD	
PRO			
MP-PRO-1	1 output 2560x1600	120GB + 2TB SSD	✓
MP-PRO-2	2 outputs 2560x1600	120GB + 2TB SSD	✓
MP-PRO-4	1 output 4K or 4 outputs 2560x1600	120GB + 2TB SSD	✓
MP-PRO-6	1 output 4K or 6 outputs 2560x1600	120GB + 2TB SSD	✓
MP-PRO-2x4K	2 outputs 4K or 4 outputs 2560x1600	120GB + Fast NVME PCIE 4TB	✓
MP-PRO-3x4K	3 outputs 4K or 6 outputs 2560x1600	120GB + Fast NVME PCIE 4TB	✓
MP-PRO-4x4K	4 outputs 4K or 6 outputs 2560x1600	120GB + Fast NVME PCIE 4TB	✓
ULTRA			
MP-UX-1	1 output 2560x1600	120GB + Fast NVME PCIE 1TB	✓
MP-UX-2	2 outputs 2560x1600	120GB + Fast NVME PCIE 2TB	✓
MP-UX-4	1 output 4K or 4 outputs 2560x1600	120GB + Fast NVME PCIE 4TB	✓
MP-UY-2x4K	2 outputs 4K or 4 outputs 2560x1600	120GB + Fast NVME PCIE 8TB	✓
MP-UY-3x4K	3 outputs 4K or 4 outputs 2560x1600	120GB + Fast NVME PCIE 8TB	✓
MP-UY-4x4K	4 outputs 4K or 4 outputs 2560x1600	120GB + Fast NVME PCIE 8TB	✓

OPTIONS

REFERENCES	
DELTA-3G-2	Live Capture 2 x 3G SDI
DELTA-412G	Live Capture 1 x 12G SDI or 4 inputs HDSDI-3G
DELTA-812G	Live Capture 2 x 12G SDI or 8 inputs HDSDI-3G
DELTA-HDMI2	Live Capture 2 x inputs HDMI 2.0
DELTA-HOST	Flex Host Card
MOD-HDMI	Flex Module single HDMI 2.0
MOD-DP	Flex Module single DP 1.2
MOD-SDI4	Flex Module 4 x SDI 3G
AD-GEN	Genlock Card
TC-PCIE-R	Timecode card reader
TC-PCIE-RW	Timecode card reader writer
RUGG	Rugged suspended enclosure with Pro AV connectors

Two turnkey media server solutions:

All your needs covered



MODULO PLAYER

More than a Media Player

A cost-effective media server ideal for your everyday projects

- Flexible playlist management
- Advanced 2D warping through our exclusive X-Map function
- Embedded low-latency live mixer **| NEW |**
- True multi-user mode for optimized setup and operation
- Easy, yet powerful show control
- User Interface designer to easily create your own UI
- Available in 4 customizable hardware configurations



MODULO KINETIC

More than a Media Server

The ultimate video solution tailored for your most challenging projects

- Non-linear, real-time timelines editing with keyframes
- Embedded low-latency live mixer **| NEW |**
- Advanced 2D warping through our exclusive X-Map function
- Advanced real-time 3D engine with generative content, incl. particles
- Projection study and simulation in 3D & VR
- 3D projector calibration
- Powerful optical tracking module **| NEW |**
- Flexible nodal programming
- Easy, yet powerful show control
- User Interface designer to easily create your own UI
- True multi-user mode for optimized setup and operation

Ready for any Application

Hundreds of projects have already been powered by our versatile and reliable systems worldwide.

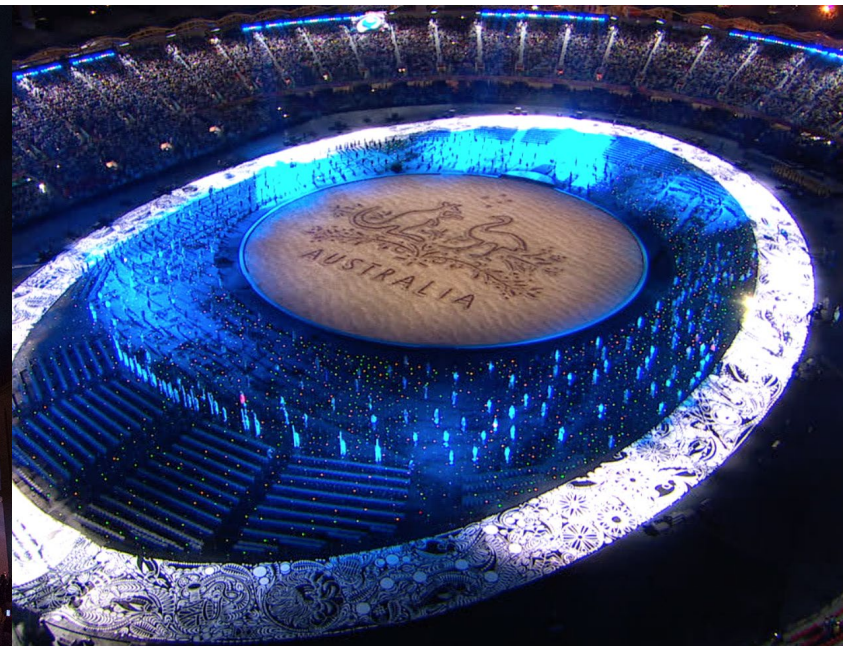
Our all-in-one approach and advanced features perfectly answer the needs of a wide array of applications: corporate events or permanent installations, creative mappings, theme parks, museums, and touring.



Identiverse 2018
Content design and creation: Immersive
Technical production: Immersive



LUX ANIMAE - Metz Cathedral / Artistic Director: Yann Nguema
Light Designers: Arnaud Doucet & Gaël Digne
Musical Composition: Ez3kiel
Production: La Maison Production © Studio pierre 2 lune



Gold Coast 2018 Commonwealth Games
Video Projection: The Electric Canvas
Production: Jack Morton Worldwide
Video Content: The Pulse