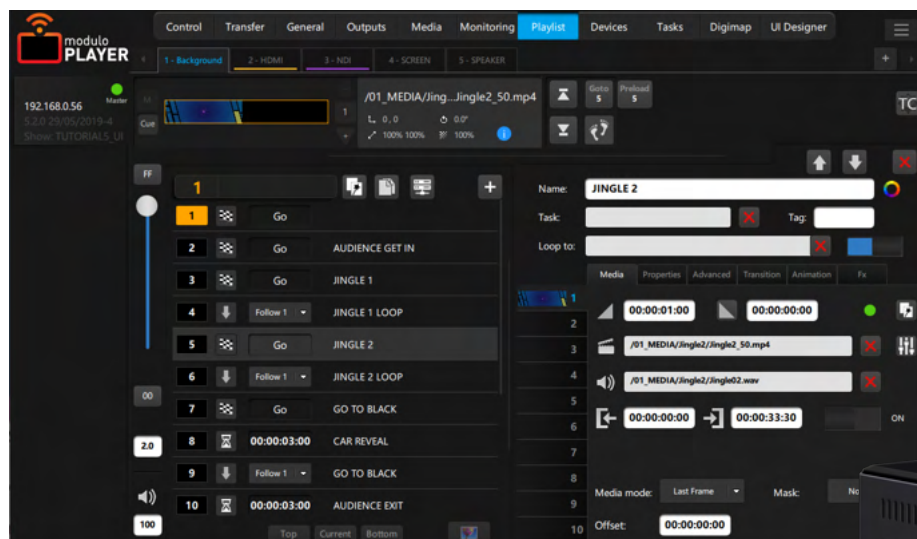


# Modulo Player Nano

REF: NANO-1



## The small form-factor player and controller

Modulo Player Nano is the perfect choice if you need a very small player for simple use. Enjoy all the benefits of a very compact hardware together with the advanced capabilities of the Modulo Player software for easy warping, media encoding, delivery, and show control.

## Hardware specifications

**Operating System:** Windows 10 LTSPB x64  
**Max. output resolution:** 1 x output 2560 x 1600 @60P  
**RAM:** 2 x 4GB DDR4  
**Storage:** 1 x SSD 250GB (40GB: OS + 200GB: Data)  
**Processor:** Intel® Core™ i5  
**LAN:** 1 x RJ45 1000Mbps

**Audio:** 1 x stereo mini jack 3.5mm  
**USB:** 3 x USB 3.1 (Gen 2)  
**Dongle:** Slim external USB dongle for protection  
**Physical video output:** 1 x HDMI 2.0a and USB Type-C (Thunderbolt) connector

## Environmental specifications

Non-operating temperature: -40°C to 60°C  
Operating temperature: 0°C to 50°C  
The operating temperature of the board may be determined by measuring the air temperature from the junction of the heatsink fins and fan, next to the attachment screw, in a closed chassis, while the system is in operation.

## Options

**Reference**  
TC-USB-R | Time code reader card - USB

## Related products, software, and tools

- [Modulo Player Lite](#): License for offline programming (requires [Modulo Pi key](#))
- [Modulo Panel](#): Companion app to host and use your custom user panels on Mac, PC, Android or iOS devices
- [Modulo Shortcut](#): Companion app to take control of your Keynote or PowerPoint presentations
- [Modulo Sync](#): Companion app to automatically transfer media to one or several Modulo Player servers
- [Modulo Wing](#): Companion app to access all your playlists and tasks on PC, Mac, Android or iOS devices

# Software specifications

## Remote control software

Free remote application (Mac/PC) to control any number of networked Modulo Player

## Playlist

Unlimited number of playlists and cues  
Cues can be triggered manually or automatically  
10 layers per cue  
High flexibility allowing last-minute changes

## Settings per layer

Position, scale, rotation, opacity, color, fade in/out  
Advanced colorimetry, crop, progressive mask, clip, and keyframed animation  
Database of 2D GPU effects  
Support for interactive shader format  
Movie: In/out time, loop mode, speed change with frame blending

## Synchronization

Synchronize any number of networked Modulo Player with an easy master/slave set-up  
Synchronization with MTC or LTC timecode (optional)

## Outputs tools

Warping grid (keystone or curve), advanced soft edge, mask, test patterns generator, advanced color adjustment  
Exclusive X-Map function for complex video mapping  
LED Pixel mapper (Art-Net)

## Medias

MPEG-2 (4:2:2), H264 (4:2:0) with multiplexed audio embedded  
HAP, HAP Alpha, HAP Q support  
Apple ProRes  
Multichannel audio file (wav,aiff)  
Still images: png, jpg, tiff  
Other media: Text, scrolling text, counter, countdown, clock, web page

## Interactivity

Easily control the parameters of your media - including position, rotation, opacity, color,... - using external devices (OSC, Art-Net, MIDI, TCP/IP rotary encoder)

## Show control

Create, control, and play automated tasks for a wide number of preloaded external devices including video-projectors, matrix switchers, video processors, etc.  
The devices' main parameters are available in our extensive library to ensure fast and easy control through Modulo Player  
Trigger tasks from specific devices such as Calendar, MIDI, OSC, GPIO, Art-Net and DMX  
Possibility to control Modulo Player with ASCII TCP/IP command with an extensive protocol

## User panel

Easily create different user panels: Drag & drop tasks, add buttons, texts, images, web pages, etc.  
User panels are compatible with PC, Mac, iOS, and Android devices

# Complimentary

Power: 12-19V D.C 90W (external power supply) with EU power cord

VESA bracket with 4 x wall screws and 2 x chassis screws

**Modulo Player Remote:** PC/Mac remote control software

**Modulo Wing:** PC/Mac application to see your playlists and launch tasks. Also available on iOS and Android

**Modulo Panel:** PC/Mac application to host your custom user panels

## Warranty

**2-year return-to-base**

# Physical specifications

Product	W	H	D
Mechanical chassis size	117 mm 4,60"	112 mm 4,40"	36 mm 1,41"
Weight	~ 0,5 kg	~ 1,1 lbs	

---

Shipping	W	H	D
Dimensions	200 mm 7,87"	200 mm 7,87"	150 mm 5,90"
Weight	~ 1,1 kg	~ 2,4 lbs	