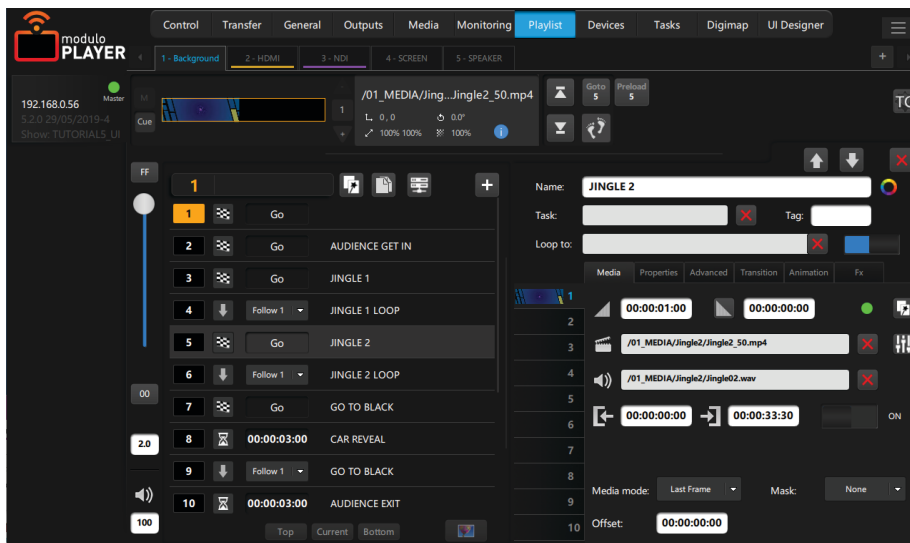


Modulo Player Nano

REF: NANO-1



The small form-factor player and controller

Modulo Player Nano is the perfect choice if you need a very small player for simple use. Enjoy all the benefits of a very compact hardware together with the advanced capabilities of the Modulo Player software for easy warping, media encoding, delivery, and show control.

Hardware specifications (Hardware Revision 2024-1)

Operating System: Windows 11 CBB x64
Max. output resolution: 1 x output 2560 x 1600 @60P
RAM: 2 x 4GB DDR4
Storage: 1 x SSD 500GB (100GB: OS + 400GB: DATA)
Processor: Intel® Core™ i5
LAN: 1 x RJ45 1000Mbps

Audio: 1 x stereo mini jack 3.5mm
USB: 3 x USB 3.1 (Gen 2)
Dongle: Slim external USB dongle for protection
Physical video output: 1 x HDMI 2.0a and 1 x mini DisplayPort connector

Environmental specifications

Non-operating temperature: -40°C to 60°C
Operating temperature: 0°C to 50°C
The operating temperature of the board may be determined by measuring the air temperature from the junction of the heatsink fins and fan, next to the attachment screw, in a closed chassis, while the system is in operation.

Options

Reference	
TC-USB-R	Time code reader card - USB

Related products, software, and tools

[Modulo Player Lite](#): License for offline programming (requires [Modulo Pi key](#))
[Modulo Panel](#): Companion app to host and use your custom user panels on Mac, PC, Android or iOS devices
[Modulo Shortcut](#): Companion app to take control of your Keynote or PowerPoint presentations
[Modulo Sync](#): Companion app to automatically transfer media to one or several Modulo Player servers
[Modulo Wing](#): Companion app to access all your playlists and tasks on PC, Mac, Android or iOS devices

Software specifications

Remote Control software

Free remote application (Mac/PC) to control any number of networked Modulo Player

Playlist

Unlimited number of playlists and cues
Cues can be triggered manually or automatically
10 layers per cue
High flexibility allowing last-minute changes

Settings per Layer

Position, scale, rotation, opacity, color, fade in/out
Advanced colorimetry, crop, progressive mask, clip, and keyframed animation
Database of 2D GPU effects
Support for interactive shader format
Movie: In/out time, loop mode, speed change with frame blending

Synchronization

Synchronize any number of networked Modulo Player with an easy master/slave set-up
Synchronization with MTC or LTC timecode (optional)

Outputs tools

Warping grid (keystone or curve), advanced soft edge, mask, test patterns generator, advanced color adjustment
Exclusive X-Map function for complex video mapping
LED Pixel mapper (Art-Net)

Medias

MPEG-2 (4:2:2), H264 (4:2:0) with multiplexed audio embedded
HAP, HAP Alpha, HAP Q, HAP R support
Apple ProRes 10bit support
NotchLC 10bit support
Multichannel audio file (wav,aiff)
Still images: png, jpg, tiff
Other media: Text, scrolling text, counter, countdown, clock, web page

Complimentary

Power: 12-19V D.C 90W (external power supply) with EU power cord
VESA bracket with 4 x wall screws and 2 x chassis screws
Modulo Player Remote: PC/Mac remote control software
Modulo Wing: PC/Mac application to see your playlists and launch tasks. Also available on iOS and Android
Modulo Panel: PC/Mac application to host your custom user panels

Warranty

2-year return-to-base

Interactivity

Easily control the parameters of your media - including position, rotation, opacity, color,... - using external devices (OSC, Art-Net, MIDI, TCP/IP rotary encoder)

ShowCcontrol

Create, control, and play automated tasks for a wide number of preloaded external devices including video-projectors, matrix switchers, video processors, etc.
The devices' main parameters are available in our extensive library to ensure fast and easy control through Modulo Player
Trigger tasks from specific devices such as Calendar, MIDI, OSC, GPIO, Art-Net and DMX
Possibility to control Modulo Player with ASCII TCP/IP command with an extensive protocol

User Panel

Easily create different user panels: Drag & drop tasks, add buttons, texts, images, web pages, etc.
User panels are compatible with PC, Mac, iOS, and Android devices

Hardware Control & Monitoring

Set up and monitor your hardware
Force EDIDs using embedded EDID generator
Set up multi-screen configurations
VNC integrated

Physical specifications

Product	W	H	D
Mechanical chassis size	117 mm 4,60"	112 mm 4,40"	37 mm 1,45"
Weight	~ 0,6 kg	~ 1,3 lbs	
Shipping	W	H	D
Dimensions	200 mm 7,87"	200 mm 7,87"	200 mm 7,87"
Weight	~ 1,2 kg	~ 2,6 lbs	