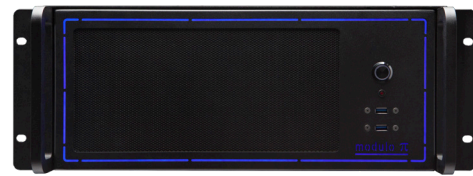
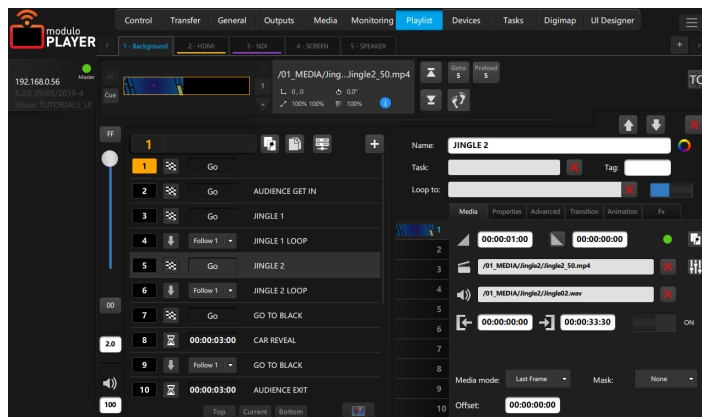


# Modulo Player Ultra with ruggedized chassis



REF: RMP-UX-1, RMP-UX-2, RMP-UX-4, RMP-UX-2x4K, RMP-UX-3x4K



## The versatile media server solution for advanced features

When user-friendliness meets unrivaled quality. Modulo Player Ultra offers still uncompressed TGA/DPX images sequences reading, active 3D stereo display, and more. In its ruggedized enclosure version, Modulo Player Ultra can endure the roughest conditions. Its reinforced suspended chassis and professional connectivity ensure utmost reliability.

## Hardware specifications (Hardware Revision 2022-1)

**Operating System:** Windows SAC x64

**RAM:** From 64GB to 128GB

**Storage:** 1 x SSD 250GB OS / DATA: Depending on version

**Processor:** AMD EPYC™

**LAN:** 2 x RJ45 10GbE etherCON

**Audio:** 2 x XLR symmetrical audio outputs

**USB:** Back panel: 4 x USB 3.0

Front panel: 2 x USB 3.0

**Graphics Card:** AMD Radeon Pro

**Pro Power Neutrik® TRUE 1 Connection**

**Power Supply:** 100-240 VAC / 50-60Hz / 850W

**Average power consumption (high load):** 450W

## Versions

Reference	Physical outputs	Outputs	Storage Data
RMP-UX-1	4 x DP 1.4	1 output up to WQXGA <sup>(1)</sup>	2TB PCIE NVMe SSD
RMP-UX-2	4 x DP 1.4	2 outputs up to WQXGA <sup>(1)</sup>	2TB PCIE NVMe SSD
RMP-UX-4	4 x DP 1.4	4 outputs up to WQXGA <sup>(1)</sup> or 1 output up to 4K <sup>(2)</sup>	4TB PCIE NVMe SSD
RMP-UX-2x4K	6 x DP 1.4	6 outputs up to WQXGA <sup>(1)</sup> or 2 outputs up to 4K <sup>(2)</sup>	8TB PCIE NVMe SSD
RMP-UX-3x4K	6 x DP 1.4	6 outputs up to WQXGA <sup>(1)</sup> or 3 outputs up to 4K <sup>(2)</sup>	8TB PCIE NVMe SSD

<sup>(1)</sup> 2560 x 1600

<sup>(2)</sup> 4096x2160

## Options

Reference		Reference	
DELTA-2x3G	Live Capture 2 x 3G SDI	MOD-HDMI	Flex module single HDMI 2.0
DELTA-1x12G	Live Capture 4 x 3G SDI or 1 x 12G SDI + 2 x 3G SDI	MOD-DP	Flex module single DP 1.2
DELTA-2x12G	Live Capture 8 x 3G SDI or 2 x 12G SDI + 4 x 3G SDI	MOD-1x12G	Flex module 4 x 3G SDI or 1 x 12G SDI
DELTA-4x12G	Live Capture 8 x 3G SDI or 4 x 12G SDI	TC-USB-R	Time code reader card - Pcie
DELTA-2xHDMI	Live Capture 2 x 4K HDMI 2.0	TC-PCIE-RW	Time code reader generator card - Pcie
DELTA-MIXED	Live Capture 4 x 3G SDI + 1 x HDMI 2.0 or 1 x 12G SDI + 2 x 3G SDI + 1 x HDMI 2.0	TC-USB-R	Time code reader card - USB
DELTA-HOST	Flex Host Card		

## Related products, software, and tools

[Auto-Calibration](#): Multi-projector auto-calibration module for planar, curved, and dome surfaces

[Modulo Player Lite](#): License for offline programming (requires [Modulo Pi key](#))

[Modulo Panel](#): Companion app to host and use your custom user panels on Mac, PC, Android or iOS devices

[Modulo Shortcut](#): Companion app to take control of your Keynote or PowerPoint presentations

[Modulo Sync](#): Companion app to automatically transfer media to one or several Modulo Player servers

[Modulo Wing](#): Companion app to access all your playlists and tasks on PC, Mac, Android or iOS devices



# Software specifications

## Remote control Software

Free remote application (Mac/PC) to control any number of networked Modulo Player

## Playlist

Unlimited number of playlists and cues  
Cues can be triggered manually or automatically  
10 layers per cue  
High flexibility allowing last-minute changes

## Settings per layer

Position, scale, rotation, opacity, color, fade in/out  
Advanced colorimetry, crop, progressive mask, clip, and keyframed animation  
Database of 2D GPU effects  
Support for interactive shader format  
Movie: In/out time, loop mode, speed change with frame blending

## Synchronization

Synchronize any number of networked Modulo Player with an easy master/slave set-up  
Synchronization with MTC or LTC timecode (optional)  
Genlock/Framelock: Contact us for more information

## Outputs tools

Warping grid (keystone or curve), advanced soft edge, mask, test patterns generator, advanced color adjustment  
Exclusive X-Map function for complex video mapping  
LED Pixel mapper (Art-Net)

## Low-latency live mixer

Dedicated multi-user remote application (Mac/PC)  
Live Preview/Program/Confidence screens  
Unlimited number of destination and mix engines  
Preset & Quickset  
Mask & Keying  
Transition effects: cut, fade, flying,...  
Cut & Take buttons  
Sources: Workspace, HDMI 2.0, low-latency SDI 3G/12G, NDI

# Environmental specifications

Max altitude: 2 700 m  
Operation temperature: 10° ~ 35°  
Non operation temperature: -40° ~ 70°  
Non operation humidity: 20% ~ 90% (Non condensing)

# Complimentary

powerCON TRUE1 cable connector  
EU power cord  
1 x active DisplayPort to HDMI adapter per output  
**Modulo Player Remote:** PC/Mac remote control software  
**Modulo Wing:** PC/Mac application to see your playlists and launch tasks. Also available on iOS and Android  
**Modulo Panel:** PC/Mac application to host your custom user panels

## Warranty

**2-year return-to-base**

## Medias

MPEG-2 (4:2:2), H264 (4:2:0) with multiplexed audio embedded  
HAP, HAP Alpha, HAP Q support  
Apple ProRes with 10 bits support  
Uncompressed still sequence TGA, or 10 bits DPX  
QuickTime uncompressed RGB, YUV8 or YUV10bits  
Multichannel audio file (wav,aiff)  
Still images: png, jpg, tiff  
Other media: Text, scrolling text, counter, countdown, clock, web page

## Interactivity

Easily control the parameters of your media - including position, rotation, opacity, color,... - using external devices (OSC, Art-Net, MIDI, TCP/IP rotary encoder)

## Show Control

Create, control, and play automated tasks for a wide number of preloaded external devices including video-projectors, matrix switchers, video processors  
The devices' main parameters are available in our extensive library to ensure fast and easy control through Modulo Player  
Trigger tasks from specific devices such as Calendar, MIDI, OSC, GPIO, Art-Net and DMX  
Possibility to control Modulo Player with ASCII TCP/IP command with an extensive protocol

## User Panel

Easily create different user panels: Drag & drop tasks, add buttons, texts, images, web pages, etc.  
User panels are compatible with PC, Mac, iOS, and Android devices

# Physical specifications

Frame	19-inch rack 4U		
Product	W	H	D
Dimensions without handles	431 mm 16,97"	176,80 mm 6,96"	645 mm 25,39"
Dimensions with handles	482 mm 18,98"	176,80 mm 6,96"	690 mm 27,17"
Weight	~ 29 kg	~ 64 lbs	
Shipping	W	H	D
Dimensions	550 mm 21,65"	310 mm 12,20"	800 mm 31,50"
Weight	~ 31 kg	~ 68 lbs	

Technical specifications are subject to change without prior notice.

